



MADE IN USA



WATCH JOHNNY RABB
DEMO OUR ARCHETYPE
WALNUT DRUM KIT!

“THE MOST VERSATILE SNARE DRUM ON THE MARKET”



Stock Snare Drums

MAP

| | |
|--|----------|
| HD146SW • 14" x 6" Satin Walnut..... | \$699.00 |
| HD146SC • 14" x 6" Satin Cherry..... | 699.00 |
| HD146SS • 14" x 6" Satin Sapele..... | 699.00 |
| HD146GW • 14" x 6" High Gloss Walnut..... | 749.00 |
| HD146GC • 14" x 6" High Gloss Cherry..... | 749.00 |
| HD146GS • 14" x 6" High Gloss Sapele..... | 749.00 |
| HD146SMA • 14" x 6" Satin Maple..... | 699.00 |
| HD148SMA • 14" x 8" Satin Maple..... | 699.00 |
| HD146TG • 14" x 6" Satin Walnut w/Maple Inlay..... | 945.00 |
| HD148HO • 14" x 8" Heritage Oak (75 Year Old Oak) Satin Black Stain..... | 932.00 |
| HD146SBU • 14" x 6" Satin Bubinga..... | 932.00 |
| HD146SPA • 14" x 6" Satin Padauk..... | 932.00 |
| HD147GLE • 14" x 7" Leopardwood Gloss Finish..... | 999.00 |
| HD146GME • 14" x 6" High Gloss Macassar Ebony..... | 1342.00 |
| HD147GME-WH • 14" x 7" Satin Macassar Ebony w/Matching Wood Hoops..... | 1999.00 |
| NEW HD146JB • 14" x 6" John Blackwell Limited Padauk w/ Gold Plated Hardware and Signature..... | 799.00 |

*Class 1 Wood Type = Maple, Walnut, Cherry, Mahogany, Sapele, Ash, Birch

*Class 2 Wood Type = Bubinga, Padauk, Birdseye Maple, Curly Maple, Purpleheart, Tigerwood, Leopardwood, Jarah

*Other Available Woods, Call for Price: Macassar Ebony, Bacote, Quilted Maple, Cocobolo, Rosewood



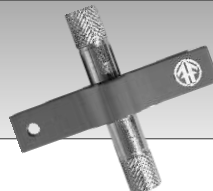
- Reduces d-tuning.
- Eliminate all metal on metal contact.
- Fit standard die-cast and flanged hoops.
- Enable lower tuning without any "rod rattle"
- Produce smoother and more accurate tuning.
- A Significant upgrade for your snare drum and drum set.



| QUANTITY | Model | Retail |
|-------------|---|---------|
| _____ SW20B | -20 Pack Black Sleeved Washers..... | \$15.00 |
| _____ SW20W | -20 Pack White Sleeved Washers..... | 15.00 |
| _____ SW50B | -50 Pack Black Sleeved Washers..... | 28.50 |
| _____ SW50W | -50 Pack White Sleeved Washers..... | 28.50 |
| _____ SW100 | -100 Pack Sleeved Washers | |
| | __Black __White __Gray __Green __Blue __Light Blue __Red..... | 40.00 |
| _____ SWSP | -Starter Pack Assorted 1000 pcs. w/ POP Display..... | 504.00 |



REVOLUTION
DRUM ACCESSORIES®



FIREFLY
DYNAMIC TUNING DEVICE

- ✓ PRECISE GEARLESS RATCHETING
- ✓ LIGHTNING FAST HEAD CHANGES
- ✓ CNC MACHINED FOR DURABILITY

| QUANTITY | Model | Retail USD |
|---------------------|-------------------------------------|------------|
| 19 _____ FF2 | -FireFly Dynamic Tuning Device..... | \$18.99 |